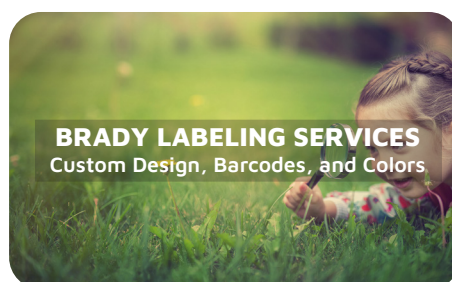
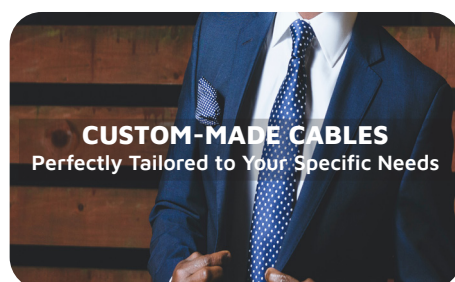
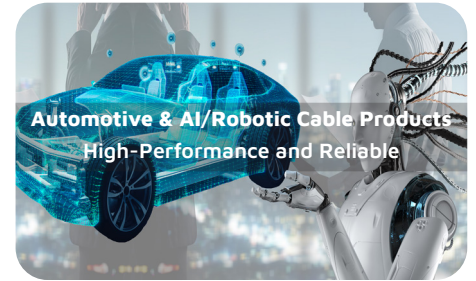
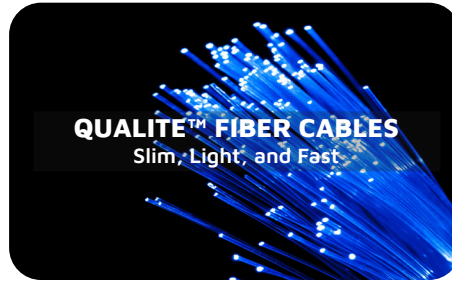
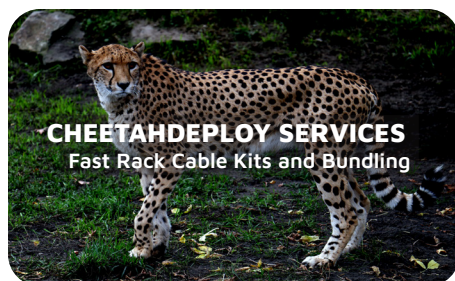
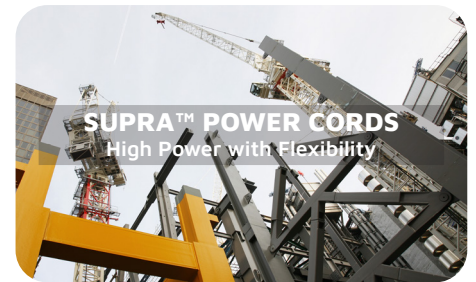
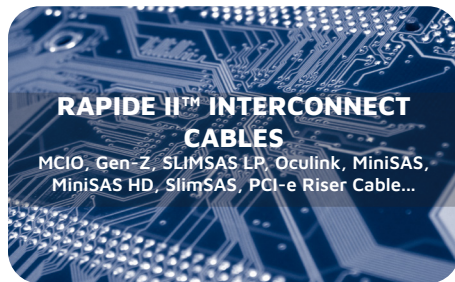




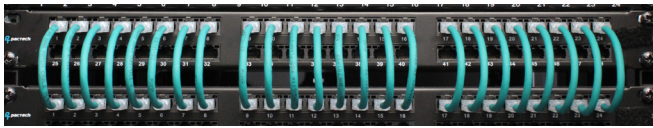
Pactech is a leading provider of high-quality connectivity solutions based in Silicon Valley. Our mission is to provide our customers a total satisfaction with their custom cables needs through innovative engineering, quality manufacturing, and handling efficiency. We support a wide variety of customers in the areas of Government, Telecommunications, Manufacturing, Retail, Health Care, High-tech, and any businesses that have data centers or provide cloud-service. With customers across the US, Canada, Europe, and Asia, we are proud to have our products used by people all around the world.

What We Do



Your Global
Cable Solutions
Partner

FlexLite™ Series CAT8/6A/6/5e UTP FUTP UFTP SFTP LSZH/Soft PVC/ Thin 28/26/24AWG



- FlexPremium
- FlexRibbon™
- FlexMini™
- FlexArch™
- SuperFlat
- Port Cassette to Plug Modules
- Port Cassette to Port Cassette



Anderson Power Products®

277V
Solution



Saf-D-Grid® to C14



Saf-D-Grid® to C20



277V Double End

- Saf-D-Grid® to C14
- Saf-D-Grid® to C20
- Saf-D-Grid® 277V Double End
- Saf-D-Grid® Single End
- Saf-D-Grid® Receptacles



2006G Ultra Short
EMI Shield Receptacle



2007G Ultra Short
Receptacle

Supra Power Cord™



SSEMCO C20 C15
D-Lock



C14/C13 Data Center
Power Cord



C20/C13 Data Center
Power Cord

- SSEMCO Locking Power Cords
- Data Center Power Cords
- North American Power Cords
- International Power Cords
- Y Splitter Power Cords
- Hospital-Grade North American Power Cords
- Red/Black Soft DC Zip Cord
- Power Cord Adapters
- HPE Power Cords LS-26 to LS-25

QualiTe™ Fiber Optic Solutions



OM4 Multifiber Breakout



OM4 12F Multi Mode
MTP/MPO



Fiber In A Box

- Fiber In A Box
- Multifiber Breakout
- Multifiber
- Simplex/Duplex

Pactech Panel Mount Series



Thin Coax VGA Male to
Female (w/ Panel Mount)



CAT6 RJ45 Male to Female
(w/ Panel Mount)



USB 2.0 (w/ Panel Mount)
Water-resistant

- RJ45
- HD15
- USB 2.0/3.0/Type C
- DB9
- Audio 3.5mm

Rapide II™ Interconnect Cables



MCIO 8x to 2x Oculink



SlimSAS 8i to 8xSATA



SlimSAS 8i LP

- MCIO SFF-TA-1016 16i/8i/4i 124p/75p/38p
- Gen-Z SFF-TA-1002 4c+ 140p
- SlimSAS LP SFF-8654 8i/4i 74p/36p
- SlimSAS SFF-8654 8i/4i 74p/36p
- Oculink SFF-8611 8i/4i 80p/42p
- MiniSAS HD SFF-8643 8i/4i
- MiniSAS SFF-8087 8i/4i
- Amphenol Serial ATA III/II
- PCI-e Riser Cables



LP PCI-e X16 Gen5 164P
Riser Cable

Rapide II™ Series DAC



800G QSFP Loopback



800G QSFP-DD Passive
Twinax Cable



400G QSFP-DD to
4xQSFP56

- 1.6T/800G/400G/200G/56G/25G/10G Loopback
- 1.6T/800G/400G QSFP
- 400G QSFPDD
- 200G QSFP56
- 100G DSFP
- 100G SFPDD
- 100G QSFP28
- 50G SFP56
- 40G QSFP
- 25G SFP28
- 10G SFP+

G-Power GPU Cables



6mm-8mm
Exposed Height



EPS 8p Left-Angled



PCIe 8p
LP Left-Angled



LP PCIe 8p
Butterfly Wiring

- GPU Cables for NVIDIA GeForce RTX 30 Series
- GPU Angled Y-Cables
- GPU Low Profile Cables
- GPU Mac Pro Cables
- GPU Premium/Standard Power Cables
- Pactech Universal GPU Power Test Kit

Automotive and AI/Robotic Cable Products



Network Switch Power



Sensors Cable



Radar Cable

Pactech USB Cables



USB 3.0 Female with
Panel Mount



USB C 3.1 Female Panel
Mount



USB 2.0 Panel Mount To
Internal Header

- USB Type C Cables
- USB 3.0/2.0 Cables
- USB Adapters
- USB Lightning Charging Cables