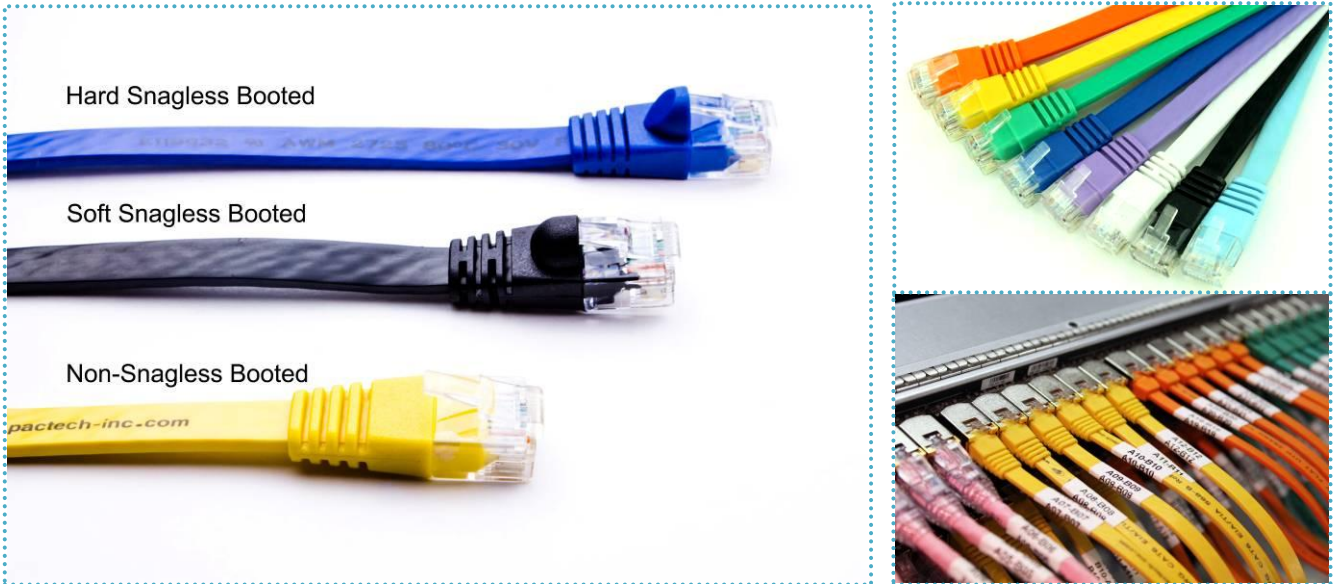




## SuperFlat Standard 28AWG CAT6 Patch Cord

This cable series comes with a small 30mm RJ45 plug at each end that allows bending in a smaller bend radius compared to the traditional round CAT6. The series makes your cabling routing easier and looks more professional.



- **Durability:** Molded snagless booted design prevents damages.
- **Flexible to install:** Unique flat design (7mm width, 2mm thickness) provides maximum flexible cable routing and rack airflow.
- **Improve network port lifetime:** Lighter weight reduces strain on network ports. Up to 35% lighter than regular round CAT6
- **3 types of connectors:**
  - Hard snagless booted connector for maximum secure cable plug-in (PN-F6X-LL-SN-28)
  - Soft snagless booted connector for ease of cable release (PN-F6X-LL-SN-28-P)
  - Non-s snagless booted connector for cost effective requirements (PN-F6X-LL-SN-28-Q)
- **Fully customizable:** Available in 8 colors; custom lengths available at up to 1/2 ft increments.

