

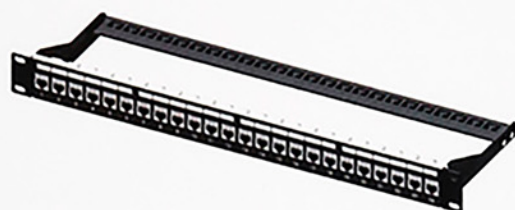


SOLUTIONS FOR ETHERNET CABLES & ACCESSORIES

ETHERNET CABLE & ACCESSORIES SOLUTION

1. PATCH PANEL

Category: C5E, C6, C6A
Shielded: UTP, FTP
Panel Port: 8, 12, 16, 24, 48
Panel Size: 10", 1U, 2U
Angle: 90°, 180°
Shape: Straight, V-Shape
Other Features: W/ID Station,
With Support Bar



1U 24port Keystone jack panel STP
PN: PGS-06-PPC6S-1U24E3WB1

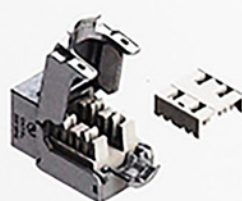


Foldable 1U 48port Keystone jack panel
UTP PN: PGS-06-PPC6U-1U48E4WB1

2. KEYSTONE JACK



C6 UTP 180° Component Level
PN: PGS-06-JC6U1-CL18RT2K1



Category: C5E, C6, C6A
Shielded: UTP, FTP
Angle: 90°, 180°
Tool Style: Tool less,
Tool-free
Other Feature:
Component Level

3. COUPLER



C6A FTP 180° In-Line Coupler
PN: PGS-06-CC6U2-18WL2W1



Category: C5E, C6, C6A
Shielded: UTP, FTP
Angle: 90°, 180°, Punch
Down
Other Feature: With
Latch

4. PLUG



CAT6 Plug 8p8c, 3 prong suitable for stranded and solid wire, gold plated 50U'', 94VO, w/ insert
PN: PGS-06-PG-C6U24C1



Category: C5E, C6, C6A
Shielded: UTP, FTP
For Round & Flat Cables.
Gold Plating. Thickness
Guarantee.
Meet FCC PART 68
Standard. Compliant
with RoHS & REACH



Safety Plug
PN: PGS-06-PG-SPLUG

5. BOOT



CAT 6 Boot OD Size 6.5, Clear
PN: PGS-06-BT-C66.5C1

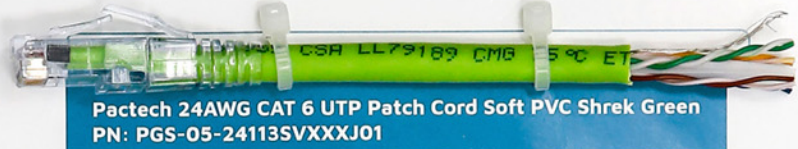


OD Size: 6.4mm
Multiple Colours Available

6. BULK



7. PATCH CORD



8. TOOLING

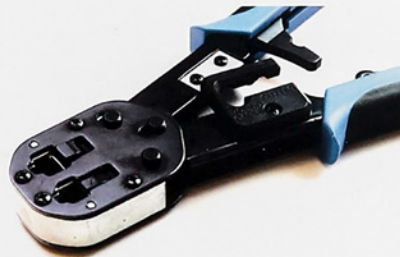
Cable Stripper

- Fit 3.5-9mm



Easy-Crimp Tool

- Crimp & Trim in one time
- Both UTP & STP fit with transparent boot



Special Jack Tool

- Particular feature supports efficient facility, saving time and effort
- Designed for a comfortable grip and allows easy and effortless installation
- Optimizes faster and easier termination



9. SURFACE MOUNTING BOX

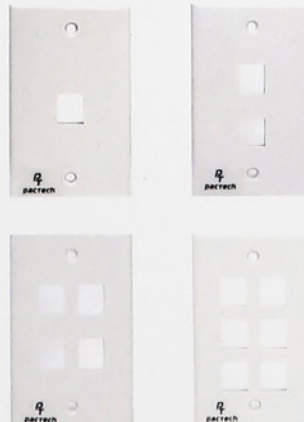


Surface mounting
box 1 port

Surface mounting
box 2 port with
keystone jack

10. FACE PLATE

American Style



British Style



OUR STORY

Founded in 1994 in the Silicon Valley, Pactech started by providing custom cables and wire harnesses for computer systems. As the rapid growth and evolution of the Internet, cloud computing, networking, and storage technologies over the last two decades, our business has become the leading cable solution provider for systems, data centers, buildings, and infrastructures.

Our mission is to deliver customers comprehensive cable offerings through innovative engineering, quality manufacturing, and supply chain efficiency. We serve a broad range of customers: cloud/service providers, high tech, manufacturing, transportation, utility, medical, and government. We have customers in North America, Asia Pacific, Europe, and Latin America.

CONTACT US

pactech-inc.com

HEAD OFFICE

Toll-free: (866) 722-8324

Phone: (408) 526-9363

Fax: (408) 526-1233

Email: sales@pactech-inc.com

Address: 2260 Trade Zone Blvd. San Jose,
CA. 95131

HONG KONG OFFICE & LOGISTICS CENTER

Phone: +852 2243-5566

Email: hksales@pactech-inc.com

Address: Room 19, 10/F, Kam Hon Industrial
Building, 8 Wang Kwun Road,
Kowloon Bay, Kowloon, Hong Kong

HONG KONG RESELLER:

HM Systems

Phone: +82 3565 5009

Email: info@hmsystems.com.hk

Address: Unit B, 11/F, Block 3, Kwun Tong
Industrial Center, 448-458 Kwun
Tong Road, Kwun Tong, Kowloon

KOREA RESELLER:

D2S Co., Ltd. / Technology Collaboration for People,
LRC & ARS

Phone: +82 70 777 6599

Email: ytleee@digital2s.com

Address: 134th St. 5, 2nd Floor, Bokjeong-Ro, Sujung-
Gu, Sungnam-Shi, Kyunggi-Do, Korea

MALAYSIA RESELLER:

Excel Commerce Solutions Sdn. Bhd. (712737-T)

Phone: +60 3 8082 7682

Email: sales@excelcomms.com.my

Address: No. 9-8-G, Jalan Jalil Perkasa 15 Aked
Esplanad Bukit Jalil
57000 Kuala Lumpur, Malaysia

INTERNATIONAL CONTACT INFORMATION

USA and Canada: sales@pactech-inc.com

HK and Macau: hksales@pactech-inc.com

China: chinasales@pactech-inc.com

Taiwan: taiwansales@pactech-inc.com

Korea: koreasales@pactech-inc.com

APAC: apacsales@pactech-inc.com

EMEA and Latin America: laesales@pactech-inc.com

Rest of the World: intlsales@pactech-inc.com